

24v battery inverter power consumption



Overview

A 1000 watt 24V inverter with a 0.4 no load current has a power consumption of 9.4 amps. This computation applies to any inverter. A 24V 200Ah battery with a PowMr 1000W inverter, at 94% efficiency and an 80% Depth of Discharge (DoD), lasts about 3. If we assume an efficiency of about 90% for the. An inverter is a device that converts DC power (Direct Current) from your battery into AC power (Alternating Current), which is the type of electricity most household appliances use. There are some times that there is no load. Now, let's explore some practical. As a rule of thumb, the minimum required battery capacity for a 12-volt system is around 20 % of the inverter capacity.

24v battery inverter power consumption

114KWh ESS



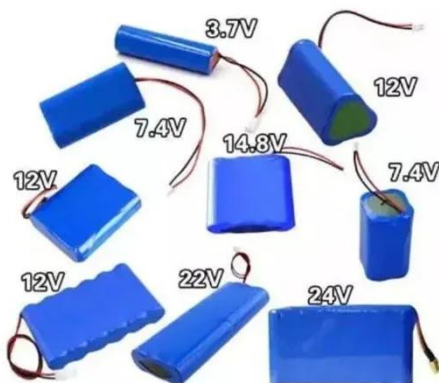
ISO 9001 ISO 14001 PICC RoHS CE MSDS UN38.3 UK CA IEC

How Long Will A 24V Battery Last With an Inverter - Let's Calculate it!

Learn how long a 24V battery lasts with an inverter. Step-by-step calculation, examples, 12V vs 24V comparison, FAQs, and tips to maximize runtime.

24V Battery Duration with Inverter: Key Factors for 1000W and 200Ah

A 24V 200Ah battery with a PowMr 1000W inverter, at 94% efficiency and an 80% Depth of Discharge (DoD), lasts about 3.6 hours. This duration considers power consumption and optimizes ...



How Much Power an Inverter Draws with No Load

To find out how much power an inverter draws without any load, multiply the battery voltage by the inverter no load current draw. A 1000 watt 24V inverter with a 0.4 no load current has a power ...

How Long Can a 24V Lithium Battery Inverter Last? A Practical Guide

Understanding the runtime of a 24V lithium battery inverter is critical for optimizing energy systems in solar installations, RVs, and off-grid applications. This article breaks down key factors, real-world ...



How much power does an Inverter use just sitting there idling?

It's pretty safe to assume that unless your unit advertises low idle power consumption, or it has a standby mode where it checks for an AC load every so often, then it has a 20-30W idle ...

How Much Power an Inverter Draws with No Load

It's pretty safe to assume that unless your unit advertises low idle power consumption, or it has a standby mode where it checks for an AC load every so often, then it has a 20-30W idle ...



Frequently Asked Questions about Inverters

There is a simple method to calculate how much power your inverter is using: For 12-volt inverters, divide the connected load by 10; for 24-volt

inverters, divide by 20.



Inverter Usage Time Calculator

Understanding how long your inverter will last is essential for efficient energy management and backup power planning. This guide explores the science behind inverter usage ...



Calculate How Long Will a 24V Battery Last - PowMr

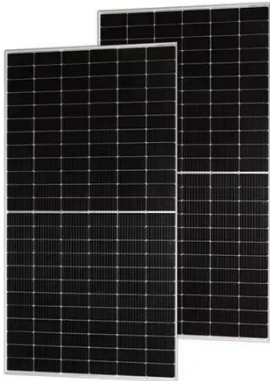
In this blog, we'll explore the factors that influence 24v battery running time and provide you with easy-to-follow formulas to estimate how long a 24V battery will last with different capacity ...



Power Inverter Power Consumption: The Complete Guide

In this guide, we will break down exactly how much power inverters use and look at the specific power needs of inverter-based appliances, such as air

conditioners. This information will help ...



Sizing a 24V Off-Grid Inverter: Match Loads & Battery Bank

Step-by-step guide to sizing a 24V off-grid inverter and matching the battery bank. Includes load inventory, inverter selection, battery Ah calculations, examples and FAQs.

Contact Us

For catalog requests, pricing, or partnerships, please visit:
<https://scelto.co.za>

