

AC combiner box photovoltaic power station



Overview

A combiner box is a key DC distribution device used between PV strings and the inverter. Each string consists of solar modules wired in series, and the combiner box gathers multiple strings into a single output while ensuring safety and system efficiency. Modern solar power stations—from residential rooftops to 1500V industrial arrays—depend heavily on high-quality electrical enclosures, advanced protection components, and intelligent data systems to maintain long-term reliability. This device plays a significant role in both residential and commercial solar installations, particularly when. For a huge photovoltaic power station, the amount of the combiner box only accounts for 1%, but 100% of the current passes through it. This guide reviews five reliable options, highlighting waterproofing, breaker configurations, surge protection, and ease of installation. Then, it puts them together into one main line.

AC combiner box photovoltaic power station



Solar Combiner Box: The Ultimate Buying Guide

In a typical photovoltaic (PV) power generation system, the combiner box is located between the module array and the inverter, serving as the hub of the entire DC side.

Photovoltaic AC combiner box detailed explanation

The photovoltaic AC combiner box is used in a photovoltaic power generation system with string inverters and is installed between the AC output side of the inverter and the grid connection point/load.



1075KWHH ESS

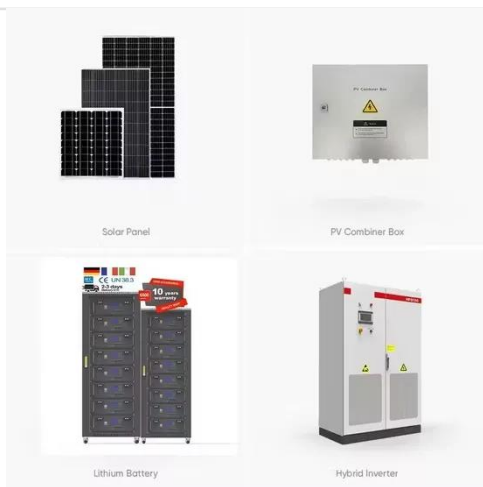


The Ultimate Guide to Solar Combiner Boxes: From Basics to ...

The design and configuration of solar combiner boxes are crucial for ensuring the efficiency, safety, and reliability of solar power systems. These boxes serve as a central hub for ...

Understanding PV Combiner Boxes: Design, Function, Protection, and

A complete guide to PV combiner boxes, covering structure, safety protection, monitoring, IP ratings, selection principles, and future smart trends. Learn how advanced combiner ...



7 Best Solar Panel Junction Boxes For Secure Connections That Pros

A solar panel junction box, or combiner box, is the unsung hero of your array, and choosing the wrong one can lead to performance bottlenecks, maintenance headaches, and even serious safety hazards.

How Does a Solar Combiner Box Work - Explained

A solar combiner box gathers multiple solar panel strings into one output, adds protection and monitoring, and feeds the combined DC power to an inverter safely and efficiently.



PV AC Combiner Box: Advanced Solar Power Management Solution

...

High performance PV AC combiner box featuring advanced monitoring,



enhanced safety features, and weather resistant construction for optimal solar power system management and protection.

What Is the Purpose of a Solar Combiner Box? When It's ...

A combiner box is important in solar power systems. It takes power from many solar panel strings. Then, it puts them together into one main line. This helps answer what is the purpose of a ...



Best AC Combiner Boxes for Solar Power Systems

Choosing the right AC combiner box is essential for safe, organized, and efficient solar power installations. This guide reviews five reliable options, highlighting waterproofing, breaker ...

PV AC combiner boxes

The new PV AC combiner boxes have been designed for PV systems with string inverters in trackers or fix tilt systems. The product portfolio is suitable for inverters from 60 kW up to 200 kW and

support ...



Contact Us

For catalog requests, pricing, or partnerships, please visit:
<https://scelto.co.za>

