

# Calculation formula for carbon emissions from photovoltaic panels



## Overview

---

$\text{CO}_2 \text{ Saved (kg)} = \text{Annual kWh} \times \text{Grid Emission Factor}$ . Also converts to trees planted equivalent. This formula has been verified by certified solar engineers and complies with industry standards. The GEC EPEAT calculator for photovoltaic (PV) modules quantifies the carbon emission savings from installing EPEAT registered PV modules that meet the EPEAT Criteria for the Assessment of Ultra-Low Carbon Solar Modules<sup>1</sup>, compared to the average solar module on the global market. The calculator. Calculate the environmental impact of your solar installation. Estimate CO<sub>2</sub> reduction, carbon offsets, and sustainability metrics. Coal-heavy regions like West Virginia see 1,800-2,000 lbs CO<sub>2</sub> displaced per MWh, while clean grids like Vermont only displace 100-300 lbs CO<sub>2</sub> per MWh. Enter your annual solar energy production to see how much CO<sub>2</sub> you're preventing.

## Calculation formula for carbon emissions from photovoltaic panels

---



### Clean Energy Offset Calculator

To calculate the carbon offset of a clean energy project, you need to know two things. The amount of energy produce by the project (in kWh) and the emission factor of the conventional ...

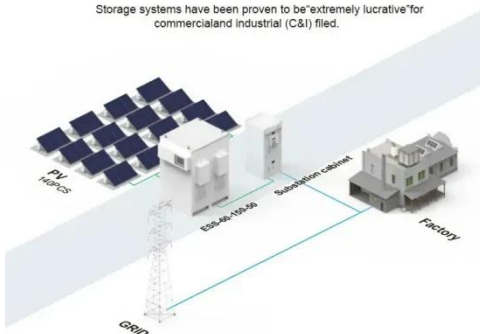
### Green Savings CALCULATOR and CO2 Renewable Energy Offset

Green Savings Calculator evaluates how much CO2, cars taken off the road, trees grown, homes & powered, by using solar energy systems.



#### BASIC APPLICATION

Storage systems have been proven to be "extremely lucrative" for commercial and industrial (C&I) filed.



### Carbon Footprint Calculator

Calculate how much CO2 emissions you save with solar energy.

### Carbon Balance Tool

The Carbon Balance tool allows to estimate the saving in CO2 emissions expected for the PV installation. The basis of this calculation are so-called Life Cycle Emissions (LCE), which represent ...

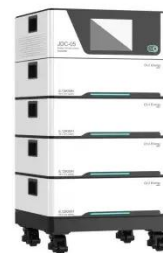


### User Guide for Photovoltaic (PV) Module Benefits Calculator May ...

The GEC PV calculator compares the carbon emissions of an EPEAT registered PV module, meeting either the Low Carbon or Ultra-Low Carbon Criteria, to the average solar module on the global ...

### How Much CO2 Does Solar Energy Save? Complete 2025 Guide

Calculating your solar system's CO2 savings requires a straightforward formula that accounts for system size, local solar irradiance, and grid carbon intensity. Annual CO2 Savings = ...



### Calculate CO2 emissions for Solar Power (Renewable ...

Calculate the carbon footprint of Solar Power (Renewable Energy). Use our calculator to estimate CO2 emissions

and compare different options.



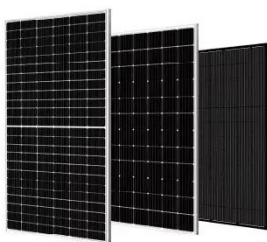
## Life Cycle Greenhouse Gas Emissions from Solar Photovoltaics

Given the large number of previously published life cycle GHG emission estimates for c-Si and TF PV systems and their narrow distribution after harmonization, the results of this research provide an ...



## Solar Carbon Offset Calculator , Calculate CO2 Reduction

Calculate your carbon footprint reduction from solar power installation. Estimate CO2 savings, environmental impact, and sustainability metrics for your solar system.



## Greenhouse Gas Equivalencies Calculator , US EPA

Convert emissions or energy data into concrete terms you can understand -- such as the annual CO 2 emissions of

cars, households, and power plants. The Greenhouse Gas Equivalencies ...



---

## Contact Us

For catalog requests, pricing, or partnerships, please visit:  
<https://scelto.co.za>

