

# Can photovoltaic panels be installed in the demolition area



## Overview

---

Solar panels installed on a historic property in a location that cannot be seen from the ground will generally meet the Secretary of the Interior's Standards for Rehabilitation. Otherwise, the project owner can decommission the facility. Decommissioning refers to removal of equipment and. When solar projects reach the end of their expected performance period, there are several management options. They include extending the performance period through reuse, refurbishment, or repowering of the facility or fully discontinuing operations and decommissioning the project. | Photo by Rhea. When installing photovoltaic panels on one- and two-family homes, it's important to understand the requirements for access pathways and the requirements for setback from the ridge, which only apply to roofs with a slope greater than a 2-in-12 pitch. These codes, which encompass structural, electrical, fire safety, and zoning regulations, provide a comprehensive framework for the proper design, installation, and.

## Can photovoltaic panels be installed in the demolition area

---



### Building Codes for Solar Panel Installation

In this article, we'll dive deep into the ins and outs of building codes for solar panel installation, covering everything from structural integrity and electrical safety to fire prevention and ...

---

### Mapping the Codes for Photovoltaic Systems , NFPA

Whether you are a system installer, property owner, or electrical inspector, finding all of the applicable requirements can be a bit like looking for buried treasure. In this blog post, I'll save you ...



---

### DECOMMISSIONING SOLAR ENERGY SYSTEMS RESOURCE ...

When solar projects reach the end of their expected performance period, there are several management options. They include extending the performance period through reuse, refurbishment, or repowering ...

---

### Best Practices for Siting Solar

## Photovoltaic (PV) on Municipal ...

Most municipalities have landfills, and these landfills are oftentimes idle and not suitable for other types of redevelopment. This document explores the opportunities and identifies best practices for ...

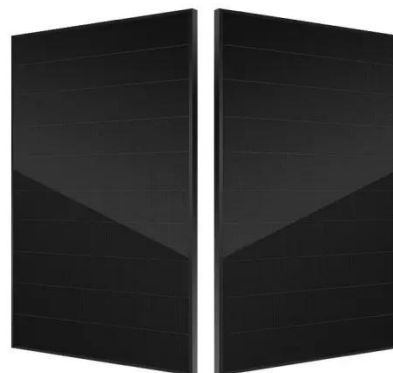


## Solar Panels on Historic Properties

Solar panels installed on a historic property in a location that cannot be seen from the ground will generally meet the Secretary of the Interior's Standards for Rehabilitation. Conversely, an ...

## Permitting and Inspection for Rooftop Solar

Generally, local governments require solar installers to obtain a permit for rooftop panels before they can be installed. Following the installation, a professional from the local government will inspect the new ...



## Residential Solar Panel Requirements

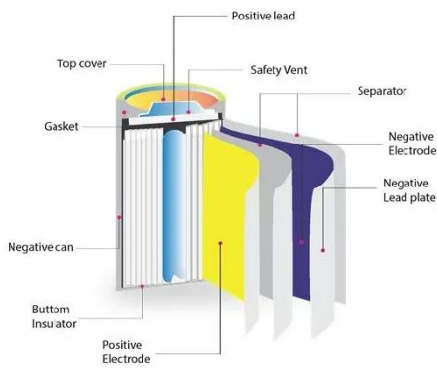
When solar panels are installed on the roofs of one- and two-family dwellings and townhouses, access pathway and



setback from ridge requirements in NFPA 1 allow responders ...

## End-of-Life Solar PV Panel Decommissioning & Recycling

An installation in reverse is what a solar decommissioning project scope looks like. Skid steers are used to collect large quantities of panels that are stacked in uniform for removal.



## What happens when a solar facility is decommissioned?

Decommissioning refers to removal of equipment and restoration of the site. Unlike some other forms of development, a decommissioned solar project site can be repurposed for other uses, such as ...

## Design and Construction of PV Structures

There have been questions - on the methods of constructing shade structures with (PV) panels over parking

and other locations on California State University property. This informational bulletin gives ...



---

## Contact Us

For catalog requests, pricing, or partnerships, please visit:  
<https://scelto.co.za>

