

# How much electricity does a container of energy storage in the industrial park generate



## Overview

---

Industrial energy storage equipment can store significant amounts of electricity, typically measured in megawatt-hours (MWh). The capacity generally ranges from 0.5 MWh to several hundred MWh, depending on the technology utilized. An energy storage system (ESS) for electricity generation uses electricity (or some other energy source, such as solar-thermal energy) to charge an energy storage system or device, which is discharged to supply (generate) electricity when needed at desired levels and quality. Significance: Determines the system's ability to meet instantaneous power demands and respond quickly to. At present, the mainstream energy density of lithium iron phosphate batteries is about 180 watt-hours/kilogram. [pdf] Your role will involve developing and implementing sales strategies. But what if your industrial park could become the equivalent of a savvy caffeine connoisseur?

Energy storage systems (ESS) are transforming how industrial zones consume power, with 42% of Chinese industrial parks now implementing storage solutions according to 2024 data [6].

## How much electricity does a container of energy storage in the industrial

---



### HOW DOES A SOLAR PARK GENERATE ELECTRICITY?

How much electricity does one kilogram of lithium iron solar container generate  
At present, the mainstream energy density of lithium iron phosphate batteries is about 180 watt-hours/kilogram. In ...

### How much electricity does the energy storage box in the industrial

...

This study summarized the advantages and limitations of common energy storage technologies in industrial parks from the aspects of service life, response time, cycle efficiency and energy



### On-Site Energy Storage Decision Guide

Energy storage can smooth both the momentary, and longer term fluctuations in power from intermittent renewable resources. There are currently no revenue streams associated with smoothing the short ...

## HOW MUCH ELECTRICITY DOES THE CONTAINER ENERGY ...

We are at the forefront of the global renewable energy storage industry, delivering customized Battery Energy Storage System (BESS) containers / enclosures to meet the growing demand for clean and ...



**Outdoor Cabinet BESS**  
50 kWh/500 kWh Battery Storage System  
Industrial and Commercial Energy Storage

- All in One**  
Integrating battery packs
- Intelligent Integration**  
integrated photovoltaic storage cabinet
- High-capacity**  
50-500kWh
- Rated AC Power**  
50-100kW
- Degree of Protection**  
IP54
- Altitude**  
3000m(>3000m derating)
- Operating Temperature Range**  
-20-60°C(Derating above 50 °C)

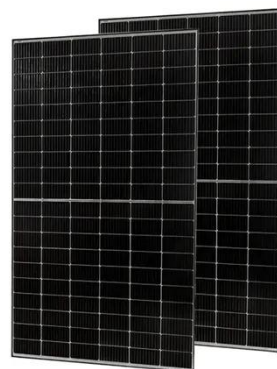


## U.S. Grid Energy Storage Factsheet

Electrical Energy Storage (EES) systems store electricity and convert it back to electrical energy when needed. 1 Batteries are one of the most common forms of electrical energy storage.

## How much power does container energy storage usually generate

Thermal energy storage is most commonly associated with concentrated solar power (CSP) plants, which use solar energy to heat a working fluid that drives a steam turbine to generate electricity.



## Electricity explained Electricity generation, capacity, and sales in

Energy storage systems for electricity generation have negative-net generation because they use more energy to charge



the storage system than the storage system generates.

---

## How to Design Energy Storage in Industrial Parks: A Practical Guide

...

Let's face it - factories guzzle electricity like college students chug energy drinks. But what if your industrial park could become the equivalent of a savvy caffeine connoisseur?



---

## Energy storage for electricity generation

The United States has one operating compressed-air energy storage (CAES) system: the PowerSouth Energy Cooperative facility in Alabama, which has 100 MW power capacity and 100 MWh of energy ...

---

## How much electricity can industrial energy storage equipment store

Industrial energy storage equipment can store significant amounts of electricity,

typically measured in megawatt-hours (MWh). The capacity generally ranges from 0.5 MWh to several ...



---

## Contact Us

---

For catalog requests, pricing, or partnerships, please visit:  
<https://scelto.co.za>

