

# How much electricity does a wind turbine generate in a day



## How much electricity does a wind turbine generate in a day

---



### How Many kWh Does a Wind Turbine Produce Per Day?

Large, utility-scale wind turbines, commonly seen in wind farms, produce substantial amounts of power. A typical modern utility-scale turbine, often around 2 to 3 megawatts (MW) in ...

### How Much Energy Does a Wind Turbine Produce?

Every year, wind turbines produce about 434 billion kilowatts (kWh) of electricity a year. Just 26 kWh of energy can power an entire home for a day. Wind is the third largest source of ...



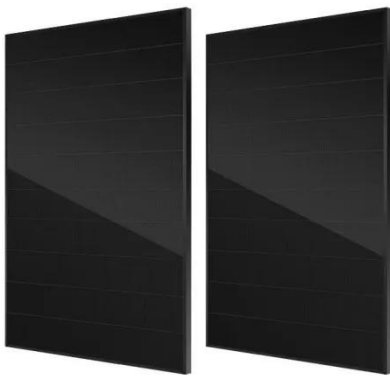
### How Much Energy does a Wind Turbine Generate?

Enough to power around 1,500 average households with electricity. As the wind blows faster, more electricity is generated. In fact, when the wind speed doubles, the electricity created can ...



### How Much Power Does a Wind Turbine Produce Per Day?

On average, a modern utility-scale wind turbine can produce approximately 3 to 12 megawatt-hours (MWh) of electricity per day, depending on factors like wind speed, turbine size, and ...



### **Power Generated by One Wind Turbine: How Much Electricity One ...**

...

On a windy day, one turbine can generate massive amounts of power. On calm days, output may drop close to zero. This variability is normal for wind turbine power generation. In strong wind regions, the ...

### **How Many Kwh Does a Wind Turbine Produce per Day?**

To sum up, wind turbines can generate an average of 2-4 kWh per day, depending on various factors like wind speed and turbine efficiency. As the saying goes, 'The wind is a fickle friend,'

...



### **How Much Power Can A Wind Turbine Produce Per Day**

Wind turbines are a significant

contributor to renewable energy, producing an average of 1.8-90 kWh of energy per day. With an average wind speed of 8 m/s, each turbine can generate ...



### How Much Power Does One Wind Turbine Generate?

Wind turbines operate by converting wind's kinetic energy into usable electricity. When air moves across the blades, it causes them to spin. That motion turns a rotor connected to a generator, ...



### How Much Power Does A Wind Turbine Generate?

In an ideal world, a turbine would convert 100 percent of wind passing through the blades into power. Because of factors such as friction, these machines only have efficiency ratings of ...

### How Much Power Does a Wind Turbine Produce Per Day? Daily Output

Q: How much power does a wind turbine

produce per day on average? A: On average, a wind turbine can produce anywhere from 1,500 to 40,000 kWh per day, depending on factors like ...



---

## Contact Us

---

For catalog requests, pricing, or partnerships, please visit:  
<https://scelto.co.za>

