

How to Choose a 20kW Communication Cabinet for a Factory



Overview

Whether you're specifying industrial enclosures for a new facility or upgrading existing infrastructure, this guide provides the technical framework and practical insights needed to make informed decisions that protect both your equipment investments and operational continuity. It directly impacts the safety, performance, and service life of your sensitive electrical components, control systems, and data communications equipment. This scenario repeats itself across global industrial facilities. Large electrical enclosures come in several designs depending on installation needs: Floor-standing: Heavy-duty enclosures placed directly on the floor, ideal for industrial use. Pad-mounted: Fixed on a concrete base for outdoor power systems.

How to Choose a 20kW Communication Cabinet for a Factory



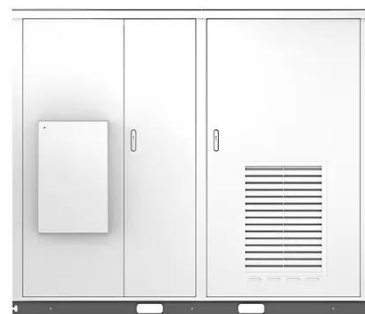
Practical Guide to Electrical Enclosures for Industrial Applications

Therefore, in order to properly select an enclosure for an application, we must know what environmental hazards the enclosure must protect against and what NEMA rating or IP code provides the desired ...

SELECTING THE RIGHT CABINET FOR YOUR ...

By selecting the right cabinet to match internal equipment protection levels, defined by the internal equipment, is the key to a reliable cost-effective telecommunication network.

Solar



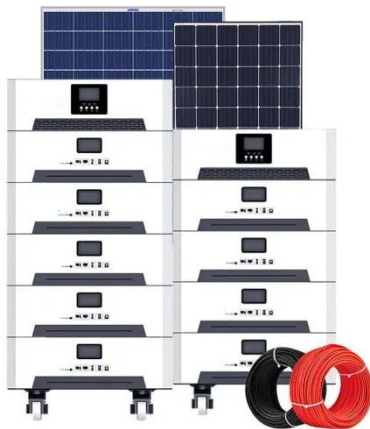
Still Guessing Which Electrical Cabinet to Choose? Our E-abel

This comprehensive guide demonstrates how pairing E-abel electrical cabinets with Weipu waterproof connectors creates optimized solutions for any industrial application.



The Complete Guide to Selecting Industrial Electrical Enclosures

Choosing the right electrical enclosure, industrial cabinet, or junction box is a critical engineering decision. It directly impacts the safety, performance, and service life of your sensitive ...

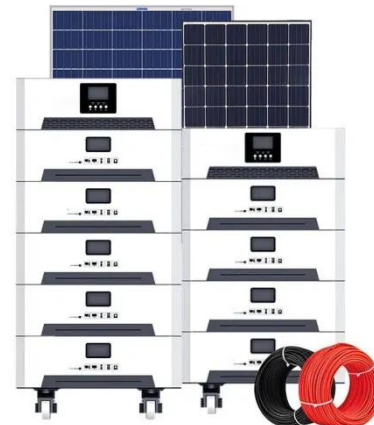


Telecom Enclosures , Racks & Cabinets for Network Equipment - Bud

Discover how to choose the right telecom enclosure for your project. Learn the difference between racks and cabinets, airflow tips, and fast deployment options. Bud Industries offers standard ...

Racks & Cabinets

Our unique cable and connectivity expertise is central to the design of this feature-rich Rack & Cabinet system, which offers ease of installation, easy MACs and high levels of scalability. There are data ...



Cabinet Design and Build

We help you choose the right cabinet, considering size, power, and cooling needs. Our designs aim for optimal



- ✓ 50KW/100KWH
- ✓ HIGHER POWER OUTPUT IN OFF-GRID MODE
- ✓ CONVENIENT OPERATION & MAINTENANCE
- ✓ PRE-WIRED

performance and energy efficiency. Ensures adequate airflow and effective heat dissipation. ...

Indoor cabinets & racks for telecom & other industries

From compact wall-mounted units to high-capacity free-standing racks, Vikinor cabinets can be tailored with accessories, finishes, and layouts to match specific site or equipment requirements. Get detailed ...



Large Electrical Enclosure: Design & Selection Guide

A large electrical enclosure houses power, control, and communication gear. This article covers protection standards (IP/NEMA), materials, thermal design, EMC, layout, installation, ...

Industrial Electrical Cabinet Selection Guide 2025

Complete guide to electrical cabinet selection, IP ratings, material specs & installation. Expert insights on industrial

enclosures for global operations.



Contact Us

For catalog requests, pricing, or partnerships, please visit:
<https://scelto.co.za>

