

How to test the current of solar energy storage cabinet lithium battery station cabinet



Overview

Let's face it – testing an off-grid energy storage system isn't exactly a walk in the park. Whether you're a solar installer, a van-life enthusiast, or a remote cabin owner, this checklist is your new best friend. Why?

. When it comes to ensuring the safety and reliability of energy storage solutions, knowing how to test a lithium ion energy storage system is crucial. **Preparation and Safety:** Prior to testing, gather essential tools (like a multimeter and battery monitor) and follow safety precautions to protect yourself and maintain the integrity of the battery during the testing process. **Step-by-Step Testing Process:** Conduct visual inspections, voltage. In our checklist, we've put together suggested regular checks that will help you detect any potential problems with the way your battery charging cabinet or store has been installed, used or looked after by your team. How you use your battery charging cabinet can impact it's efficacy and. The documentation available online is generally the latest version. For the best experience of this site, please enable Javascript for the www. For example, a 30kWh rack battery cabinet.

How to test the current of solar energy storage cabinet lithium batt

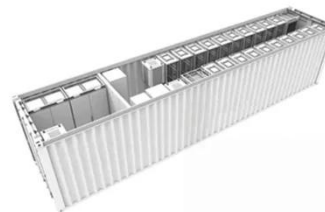


The Ultimate Guide to Battery Energy Storage Cabinet ...

Let's face it - commissioning a battery energy storage cabinet without proper testing is like skydiving without checking your parachute. The battery energy storage cabinet commissioning test report isn't ...

Inspection Checklist for Your Lithium-ion Battery Charging Cabinet

In our checklist, we've put together suggested regular checks that will help you detect any potential problems with the way your battery charging cabinet or store has been installed, used or ...



How to Check Battery Capacity: A Complete Guide for Energy Storage

Battery capacity checking refers to the process of determining how much energy a battery can store and deliver. For lithium iron phosphate (LFP) batteries widely used in energy ...

Galaxy Lithium-ion Battery Cabinet

Manuals

Galaxy Lithium-ion Battery Cabinet With 10, 13, 16, or 17 Battery Modules - Installation and Operation Galaxy Lithium-ion Battery Cabinet SMPS AC/DC Converter - Installation



The Ultimate Off-Grid Energy Storage System Test Checklist: Don't ...

Let's face it - testing an off-grid energy storage system isn't exactly a walk in the park. Whether you're a solar installer, a van-life enthusiast, or a remote cabin owner, this checklist is your ...

How to Test a Lithium Ion Energy Storage System: A Practical Guide

...

The first step in how to test a lithium ion energy storage system involves comprehensive electrical inspections. This includes measuring the voltage and current of individual battery cells and ...



A Complete Guide to Battery Storage Performance Testing

Overview of lithium-ion battery storage

performance tests, including objectives, steps, and standards for normal temperature storage, high heat, and shell stress.



DETAILS AND PACKAGING

ESS Battery Cell Performance Testing Cabinet

The ESS Battery Cell Performance Testing Cabinet is a high-precision system designed to evaluate the electrical and thermal performance of energy storage system (ESS) battery cells.



Galaxy Lithium-ion Battery Cabinet Installation and ...

The documentation available online is generally the latest version.

How to Test a Solar Battery: A Comprehensive Guide for Optimal

Discover how to effectively test your solar battery to ensure optimal performance and longevity. This

comprehensive guide covers essential tools, safety measures, and step-by-step

...

GRADE A BATTERY

LiFePO4 battery will not burn when overcharged/over discharged, overcurrent or short circuit and can withstand high temperatures without decomposition.



Contact Us

For catalog requests, pricing, or partnerships, please visit:
<https://scelto.co.za>

