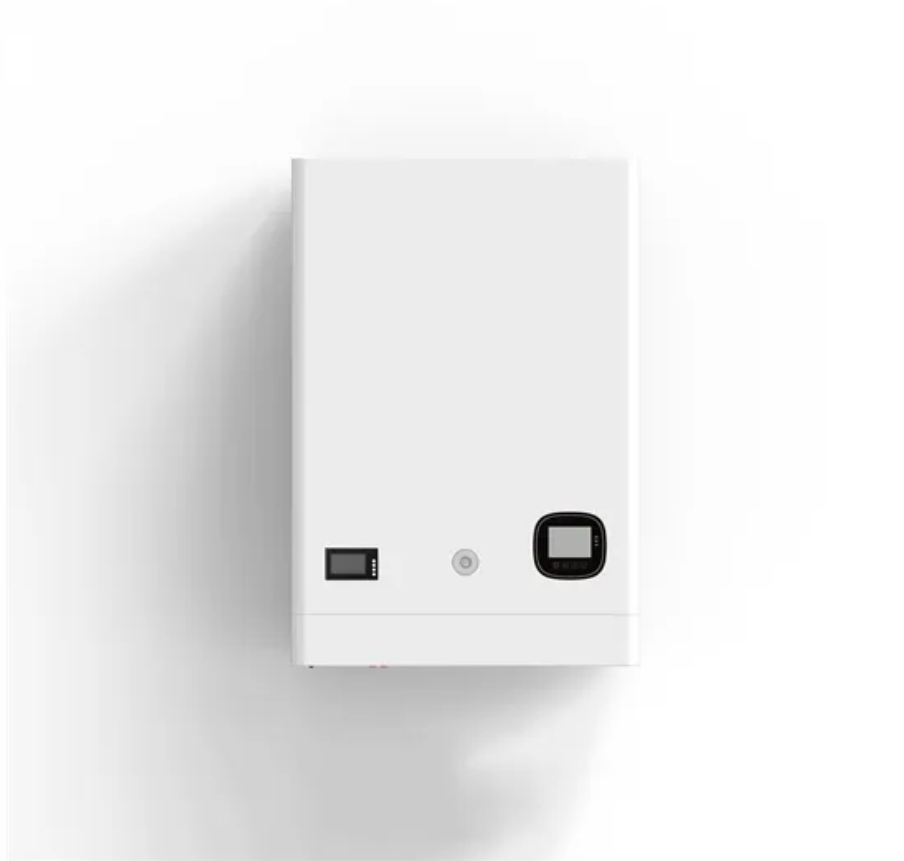


# Maximum size of solar photovoltaic panels



## Overview

---

Absolutely—commercial and utility projects often use larger 72-cell or 96-cell solar photovoltaic panel sizes, which can be 78 inches or longer. Since commercial roofs and ground mounts have fewer space constraints, larger panels are used to maximize installation efficiency and. Standard Residential Panels Optimize Space and Handling: The industry-standard 60-cell panel dimensions (65" × 39" × 1.5") aren't arbitrary - they represent the optimal balance between power output, installation ease, and roof space utilization. At 40-46 pounds, they can be safely handled by. Example: 5kW solar system is comprised of 50 100-watt solar panels. Alright, your roof square footage is 1000 sq ft. Can you put a 5kW solar system on your roof?

For that, you will need to know what size is a typical 100-watt solar panel, right?

To bridge that gap of very useful knowledge needed. Commercial solar panels are designed for large-scale energy production for factories, solar parks, institutions, and other businesses. These panels generally weigh more than 50 pounds and have a 6 x 12 grid. Understanding these dimensions is crucial for homeowners planning their solar installation, as panel size directly impacts system. Solar panel size shapes everything from the watts to the ease of lifting a module onto a roof.

## Maximum size of solar photovoltaic panels

---



### Standard Solar Panel Sizes And Wattages (100W-500W Dimensions)

To bridge that gap of very useful knowledge needed, we have compared and averaged the sizes of 100-watt to 500-watt solar panels available on the market. The goal here is to get to the average solar ...

---

### Detailed Guide to Solar Panel Size & Dimensions

Choosing the proper system is not only about the solar panel dimensions. You should also consider wattage, number of cells, layout possibilities, and energy consumption. Also, your ...



---

### What Are the Common Solar Panel Sizes?

Still, most 60-cell solar panels have a size of 39" X 66" and most 72-cell solar panels have sizes of around 39" X 77". However, panels with cell counts of 96, 120, and 144 may have different ...



---

### Solar Panel Size: 2026 Detailed

## Guide

In this article, we will discuss all the important aspects of solar panel size. This guide will help you select the right solar panel size through detailed calculations.

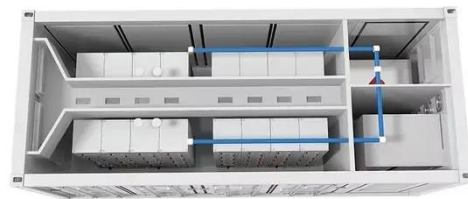


### Perfect Solar Panel Sizes for Your Home (Expert Sizing Guide)

Most residential solar panels measure between 65 to 75 inches long and 39 to 41 inches wide, delivering power outputs ranging from 250 to 400 watts per panel.

### standard solar photovoltaic panel sizes explained

Discover standard solar photovoltaic panel sizes. Choose the perfect fit for your installation with our expert guide. Learn more today!



### A Complete Guide to Solar Panel Size , 8MSolar

Residential solar installations usually use 60-cell panels, which have become the industry standard for home energy systems. These panels measure

approximately 65 inches by 39 inches, or ...



## Understanding Solar Panel Dimensions In 2025: A ...

Explore the most common solar panel dimensions in 2025, including residential and commercial sizes.



## Solar Panel Size Guide , Best Panel Size for Your Roof

Solar cells are assembled in grids, and the most common configurations are 60-cell panels for residential use and 72-cell panels for commercial or utility use. A 60-cell panel (often seen on ...

## Solar Panel Size & Dimensions Guide 2025 , Complete Specs

In this comprehensive guide, you'll learn everything you need to know about solar panel sizing, from standard dimensions to weight considerations, helping you

determine the perfect solar ...



---

## Contact Us

For catalog requests, pricing, or partnerships, please visit:  
<https://scelto.co.za>

