

# Neutral Voltage Requirements for Communication Base Stations



## Overview

---

March 2019 // in 2019, Publications This whitepaper addresses the performance criteria of base station antennas, by making recommendations on standards for electrical and mechanical parameters, by providing guidance on measurement and calculation practices in performance. March 2019 // in 2019, Publications This whitepaper addresses the performance criteria of base station antennas, by making recommendations on standards for electrical and mechanical parameters, by providing guidance on measurement and calculation practices in performance. Some of the requirements for electrical supply structures, equipment, and locations share basic similarities to standards for residential, commercial, and industrial systems covered in the NEC. Reference NESC Rule 234E for Diving platforms, water slide, or other pool A objects greater than 8 feet in height. Aboveground pool with deck. to neutral comm. In order to apply the NEC to substation design, we must first and foremost educate ourselves and understand the intent of the NEC and then decide how or safeguarding personnel and equipment. The topics in these publications are so broad that it would be. Abstract - The most common medium voltage electric distribution system in the United States is multigrounded wye using a common neutral for both primary and secondary systems.

## Neutral Voltage Requirements for Communication Base Stations

---



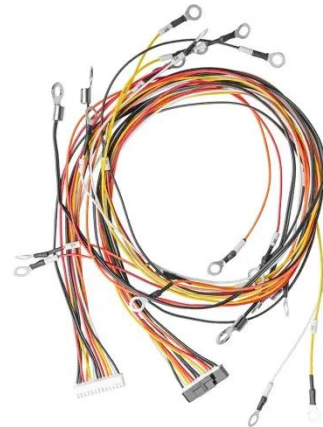
### KPUB National Electric Safety Code Graphic

Summary of NESC Clearances to Communication Cables See NESC for details and exceptions PRIMARY 40 inches to 7.2 kV

---

### Summary of NESC Clearances to Communication Cables see ...

\*\* Fiber Optic Cables in the supply space (Rule 224A) will have the same required clearance to communication cables in the communication space as a multi-grounded neutral (Rule 235C)



### Recommendations for Base Station Antennas

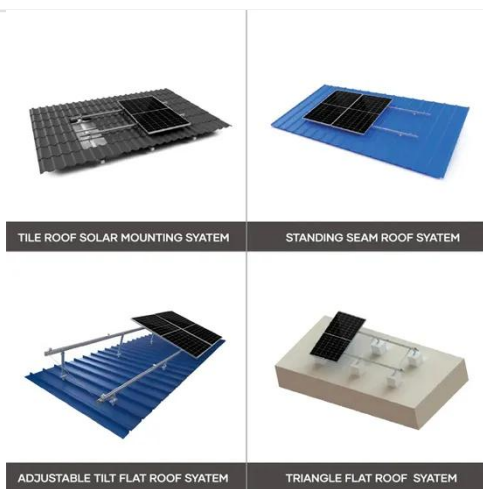
For the first time, the mobile industry has been provided with a single document that sets shared rules for describing passive, active and hybrid base station systems, thanks to the latest ...

---

### Applying National Electrical

## Substations

A discussion of the National Electrical Code (NEC) and National Electrical Safety Code (NESC) design considerations as applied to utility substations, including working clearances, cable tray, cables, ...



## NESC Reference for the Purpose of TMI License Renewal

The purpose of these rules is the practical safeguarding of persons during the installation, operation, or maintenance of electric supply and communication lines and associated equipment.

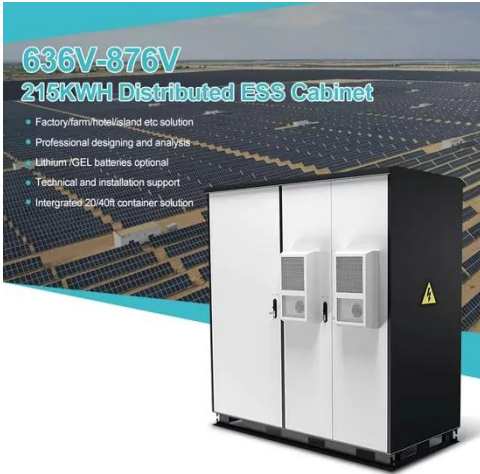
## Neutral Voltage Requirements for Communication Base Stations

3GPP defines the radio frequency (RF) conformance test methods and requirements for NR base stations in the technical specification TS 38.141, which covers transmitter (Tx), receiver (Rx), and ...



## Grounding Paper

Both codes require interconnection of the power, telephone, CATV, and customer grounding conductors at the

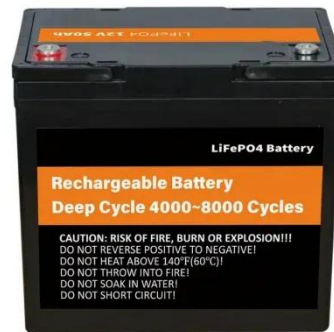


served installation, in order to limit voltage potentials that may be hazardous to personnel or ...

## 7\_SC7\_NESC Workshop\_ Revised

Three phase cables normally have one third size neutrals. Recent studies show that a one third size neutral will carry the phase to ground fault current needed to cause the protective device to open and

...



## Application Guide for 2023 NESC Table 232-1

\*\* Fiber Optic Cables in the supply space (Rule 224A) will have the same required clearance to communication cables in the communication space as a multi-grounded neutral (Rule 235C)

## Contact Us

For catalog requests, pricing, or partnerships, please visit:  
<https://scelto.co.za>

