

# Photovoltaic panels installed with universal angle steel



## Overview

---

That's why unequal angle steel has become a backbone of photovoltaic (PV) support systems. With one leg longer than the other, this steel shape offers a unique mix of strength and flexibility, perfect for withstanding wind loads while keeping installation costs in check. Solar panel angle mounts represent a critical component in photovoltaic system installations, designed to position solar panels at optimal angles for maximum energy generation throughout the year. These specialized mounting systems enable precise adjustment of panel orientation, allowing installers. Solar farms stretch across fields and rooftops, their panels tilting gently toward the sun. But beneath that serene surface, a constant battle rages—between the structure and the wind. A sudden gust or sustained storm can exert forces strong enough to twist, bend, or even topple solar panel. IronRidge® Tilt Mount supports a wide range of solar panel tilting angles, while also resisting the extreme wind and snow forces experienced over a building's lifetime. The Tilt Mount System is listed to UL 2703, and compatible with most roof anchor products. Our 10 -15 deg, 15 - 30 deg and 30 60 deg are mainly controlled by back leg's height, in this way installers can eliminate welding and cutting on site. Whether it's standing seam roof systems to shingle roof system applications, SCI has an attachment to accommodate all of your solar panel installation needs. Unlike more temporary or flimsier materials, steel structures keep panels in place and operational for many decades, even under unusually occurring heavy winds, snow, or fluctuating.

## Photovoltaic panels installed with universal angle steel

---

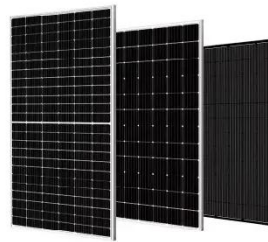


### **ADJUSTABLE ANGLED SOLAR SINGLE PANEL MOUNT FOR ALL PANEL ...**

This single solar panel universal mount fits any solar panel and can be mounted almost anywhere. The pre-assembled legs with included base allow for quick installation and minimal labor.

### **Adjustable Tilt Solar Mounting for metal, sandwich roof top**

They offer great flexibility in terms of installation. The systems are suitable for most commercially available solar panels and all types of roofs, and are easily scalable from small installations to large ...



### **Steel Structures for Photovoltaic: Roof-Only Applications**

Steel structures in photovoltaic systems serve as the backbone for rooftop solar installations. They are cost-effective and durable, and can function optimally with minimal ...

## Unequal Angle Steel: PV Support Wind Load Design & amp Spacing

That's why unequal angle steel has become a backbone of photovoltaic (PV) support systems. With one leg longer than the other, this steel shape offers a unique mix of strength and ...



## Steel Adjustable Universal Pole Mount Optimize Solar Panel ...

With our 2 way adjustable solar panel pole mount, the built-in protractor will allow you to easily adjust the angle of your panels to any degrees. This way, you will be able to maximize you solar energy ...

## Premium Solar Panel Angle Mounts

Discover high-performance solar panel angle mounts designed for optimal energy capture. Our adjustable mounting systems feature weather-resistant construction, precision angle adjustment, and ...



## Metal Roof Solar Mounting System: The Ultimate 2025 Installation

Installing solar panels on metal roofs is a highly efficient solution for residential and commercial projects. A proper metal

roof solar mounting system ensures structural integrity, reduces ...



- 50KW/100KWH
- HIGHER POWER OUTPUT IN OFF-GRID MODE
- CONVENIENT OPERATION & MAINTENANCE
- PRE-WIRED

## Steel Adjustable Universal Pole Mount Optimize Solar ...

With our 2 way adjustable solar panel pole mount, the built-in protractor will allow ...



## 12.8V 100Ah



## IronRidge Tilt Mount

Build strong and efficient solar arrays on flat roofs. IronRidge Tilt Mount ...

## IronRidge Tilt Mount

Build strong and efficient solar arrays on flat roofs. IronRidge Tilt Mount supports a wide range of solar panel tilting angles, while also resisting the extreme wind and snow forces experienced over a ...



### **Voltset Solar Panel Mount Stand: 13.8in Immortal Steel Adjustable Angle**

Rugged and Waterproof - This solar panel mount features a robust, durable construction combined with waterproof and rustproof technology. Stable and Reliable - It withstands the test of ...

## **Contact Us**

For catalog requests, pricing, or partnerships, please visit:  
<https://scelto.co.za>

