

# Price of photovoltaic panel C-shaped steel



✓ 100KW/174KWh

✓ Parallel up-to 3sets

✓ IP Grade 54

✓ EMS AND BMS



## Overview

---

Below is a comprehensive breakdown of the most common types of steel C channel solar panel profiles used in modern installations. Made from high-strength carbon or galvanized steel, these profiles offer excellent structural rigidity and longevity. Tianjin Wenli New Energy Technology Co., abbreviated as "Tianjin Wenli", was established in 2012 and is located in the Daqiuzhuang Industrial Development Zone, a steel base in Tianjin. It covers an area of 46,000 square meters and has a construction area of 35,000 square meters. These profiles are typically shaped like the letter "C" in cross-section, allowing for easy integration with clamps and mounting hardware. Furthermore we can manufacture according to customer wishes. If you have any ready design for your need please feel free to share it. Our prices will be. The C-shaped steel system bracket is made of carbon steel and is surface treated with hot-dip galvanizing or magnesium-aluminum-zinc plating, which has excellent anti-corrosion performance and ensures that the bracket system can be used for a long time in harsh outdoor environments. The installation area of Hot-Dip Galvanized Steel photovoltaic bracket can be ground screw, concrete foundation, C-shaped steel pile or H-shape.

## Price of photovoltaic panel C-shaped steel

---

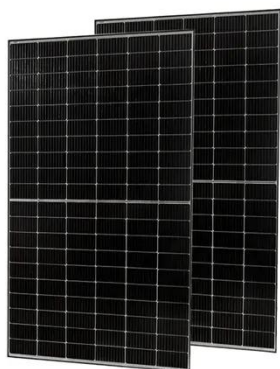


### CE-Certified Industrial C-Shaped Steel

CE-Certified Industrial C-Shaped Steel, Find Details and Price about Solar Panel Bracket Photovoltaic Support Frame from CE-Certified Industrial C-Shaped Steel - Tianjin Wenli New Energy Technology ...

### C-type Steel Ground Photovoltaic Bracket

As one of the leading c-type steel ground photovoltaic bracket manufacturers and suppliers in China, we warmly welcome you to buy cheap c-type steel ground photovoltaic bracket for sale here from our ...



### Steel c channel solar panel profile

Below is a comprehensive breakdown of the most common types of steel C channel solar panel profiles used in modern installations. Made from high-strength carbon or galvanized steel, these profiles offer ...

### Is C-Shaped Steel the Most Reliable

## Option for Your PV Installation?

C-shaped steel, also known as C-channel steel, is a roll-formed structural profile widely used in solar ground mounting systems. It gets its name from its cross-sectional shape, resembling the letter "C".



### C-shaped steel ground mounting

The C-shaped steel ground mounting system is a robust and versatile solution designed specifically for installing solar photovoltaic panels on the ground. This system plays a crucial role in maximizing

...

### Cold Formed Steel for PV Panel Support

With its outstanding structural strength, excellent cost performance and flexible adaptability, it has become an ideal framework material for various photovoltaic projects, especially rooftop power ...



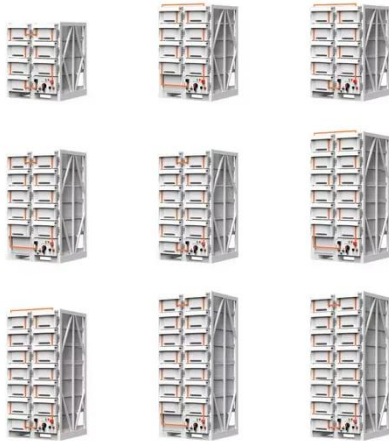
### Steel c channel solar panel profile

Below is a comprehensive breakdown of the most common types of steel ...



## Solar Panel Support Steel C Channels

Shop high-quality solar panel support steel c channels for reliable PV systems. Durable, corrosion-resistant, and perfect for roof or ground mounting.



## Solar Energy

Our prices will be competitive with high quality standards. Our roll form machinery can do solar panel support profiles, U Profile, C Profile and additionally support profiles for PVC windows ...

## Special C-Shaped Steel for Rooftop Photovoltaic Projects

With its outstanding structural strength, excellent cost performance and flexible adaptability, it has become an ideal framework material for various

photovoltaic projects, especially rooftop power ...



---

## Contact Us

---

For catalog requests, pricing, or partnerships, please visit:  
<https://scelto.co.za>

