

Romania Communications Green Base Station Lightning Protection



Romania Communications Green Base Station Lightning Protection

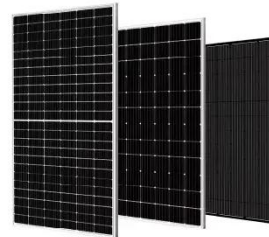


Romania communication base station wind power lightning protection

When overhead pipelines are struck by lightning, overvoltage is introduced into the base station room, which is likely to burn out the communication equipment of the base station.

Communication green base station carries out lightning protection

How does a lightning protection system work? Reduces the risk of a direct strike by lowering the electric field to below lightning-collection levels within the protected area. Safely collects any strikes it cannot ...



Lightning protection solution for telecom communication base stations

The lightning arrester for the RuTian feeder is installed at the connection between the antenna and the feeder to prevent lightning from entering the main equipment of the base station ...

Lightning protection for communication base stations

The protection of GSM and base station towers from lightning and overvoltage is provided by integrating external lightning systems, internal lightning systems, earthing, equipotential



How to Safeguard Mobile Base Stations from Lightning?

In this article, we break down the key requirements of the industry standard YD5068-98 - Code for Design of Lightning Protection and Grounding of Mobile Communication Base Stations, and explain ...

Communication Base Station Lightning Arrestor , Huijue Group E-Site

As climate change increases lightning density by 12% per decade (NOAA 2024 data), the industry must adopt adaptive protection systems. The next-generation communication base station lightning ...



LIGHTNING PROTECTION SOLUTION FOR TELECOM ...

The protection of GSM and base station towers from lightning and overvoltage is



provided by integrating external lightning systems, internal lightning systems, earthing, equipotential bonding and LV surge ...

Communication green base station equipment installation ...

The protection of GSM and base station towers from lightning and overvoltage is provided by integrating external lightning systems, internal lightning systems, earthing, equipotential bonding and LV surge ...



Romania Communications Green Base Station Lightning Protection

The protection of GSM and base station towers from lightning and overvoltage is provided by integrating external lightning systems, internal lightning systems, earthing, equipotential bonding and LV surge ...

Lightning and Surge Protection for Communication Station

Install lightning rods, grounding, surge protectors, shielding, and follow

standards for effective communication
station protection.



Contact Us

For catalog requests, pricing, or partnerships, please visit:
<https://scelto.co.za>

