

Sodium ion outdoor power supply



Overview

At its core, the device is a large rechargeable unit designed to keep electronics and appliances running during outages or off-grid travel. A1: If you're outdoors in the cold, this power station is made for you. With 900 Wh capacity, 1,500 W output, and a tough sodium-ion battery that keeps working down to -25°C (-13°F), it's perfect for winter campers, snow photographers, polar researchers, or anyone in cold regions who needs reliable. The Bluetti Pioneer NA is the world's first portable power station using sodium-ion battery technology, offering superior cold-weather performance, enhanced safety, and faster recharge times compared to lithium-ion batteries. Announced at the 2025 IFA event in Berlin, this innovative power station boasts cutting-edge Sodium-ion Battery technology, offering a compelling. Bluetti, a growing name in portable power, just announced what it's calling the world's first sodium-ion power station at IFA in Berlin, Germany. It might be exactly what I need this winter. Unlike lithium-based systems, which.

Sodium ion outdoor power supply

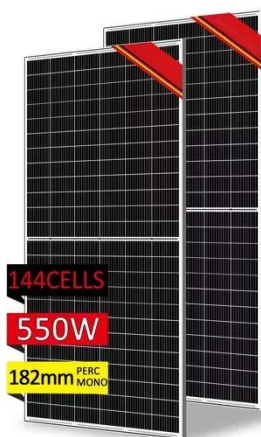


Bluetti Pioneer NA Sodium-Ion Review: Features, Benefits & Trade ...

The Bluetti Pioneer NA is the world's first portable power station using sodium-ion battery technology, offering superior cold-weather performance, enhanced safety, and faster recharge times

BLUETTI Pioneer Na brings sodium-ion power for -25°C operation

BLUETTI has introduced the Pioneer Na portable power supply, a 900 Wh power station that swaps the typical lithium-ion battery pack for sodium-ion cells.



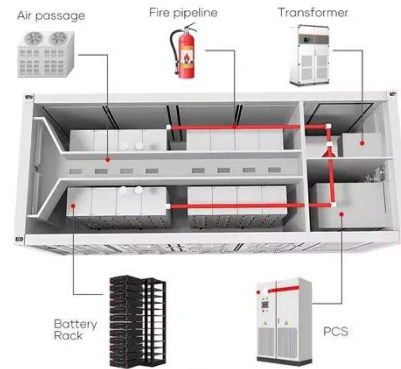
BLUETTI Pioneer Na Portable Power Station (Sodium-ion) , 1.500W ...

With the Pioneer Na, you can safely charge at -15°C (5°F) and discharge at -25°C (-13°F) without extra prep. From ice fishing to snow camping or handling a winter blackout, it keeps your gear running no ...

World's first sodium-ion power

station is ready for ...

Bluetti's Pioneer Na is the world's first sodium-ion power bank, launches alongside a new slim power bank for fridges.



BLUETTI Pioneer Na Power Station is Built for Extreme Cold

Thanks to the sodium-ion chemistry, BLUETTI's new device overcomes this limitation, giving users dependable energy during extreme winter expeditions or critical power needs in harsh ...

Bluetti's New Sodium-Ion Power Station Is Built for Cold Weather

That's more than enough to power a fridge, phones, laptops, and other essentials during a power outage. Using sodium-ion instead of an LFP battery, Bluetti claims it'll continue working even ...



Bluetti Unveils the World's First Sodium-Ion Portable Power Station

Since traditional LFP batteries struggle to charge below 0 °C (32 °F), the sodium-



ion alternative offers a significant advantage for households and outdoor activities in frigid climates.

Bluetti Pioneer Na debuts with a 900 Wh sodium-ion power station ...

At IFA 2025, Bluetti introduced Pioneer Na, described as the first portable power station to use sodium-ion batteries. At its core, the device is a large rechargeable unit designed to keep



Bluetti Pioneer Na: World's First Sodium-Ion Power Station for ...

Bluetti's Pioneer Na is the world's first sodium-ion portable power station, excelling in extreme cold down to -40°C with abundant, low-cost sodium chemistry. It outperforms lithium-ion ...

BLUETTI Pioneer Na Sodium-Ion Portable Power Station

With the Pioneer Na, you can safely charge at -15? (5?) and discharge at -25? (-13?) without extra prep. From ice fishing to snow camping or handling a

winter blackout, it keeps your gear running no ...



Contact Us

For catalog requests, pricing, or partnerships, please visit:
<https://scelto.co.za>

