

Solar container battery charging current limit



Overview

The maximum charging current for a lithium solar battery depends on several factors, including battery chemistry, capacity, temperature, and charger specifications. It's important to follow the manufacturer's guidelines to ensure safe and efficient charging. I have a SmartSolar MPPT 150/70-Tr VE. Can and 3000W of solar connected on the Charge Controller. 5A, which I imagine i want to get as close to as possible in order to charge the battery as quickly as possible, but looking at descriptions of charge controllers it. The maximum charging current for a lithium solar battery isn't a one - size - fits - all number. For example, Lithium Iron Phosphate (LiFePO4 or LFP) batteries are quite popular in solar applications. Can a 300A BMS with a 100A max charge current typically exceed that charge level for 1-2 hours by a small % without causing damage?

On the discharge side, the BMS has a Current Limit Protection of 1200A and. A hybrid inverter is a versatile device that manages solar panel input, battery charging, and power supply to loads, supporting both off-grid and grid-tied modes. Unlike traditional off-grid inverters (battery-only) or grid-tied inverters (grid-dependent), hybrid inverters offer flexibility for. I have a 12V, 200Ah lead acid tubular battery which I charge with solar panels using a PWM or MPPT charge controller. PV array specs are: As we know, during the first bulk charging stage, chargers apply a constant high current to the battery. To have a longer battery life, I want to charge the.

Solar container battery charging current limit



Solar Battery Life Questions Answered for Container Sizing

Checking the system often and using smart monitoring protects solar battery life and keeps solar storage working in every container. To pick the best container size, first learn how much ...

Looking for help understanding maximum charging current

On the brink of setting up my first solar system as part of my van conversion. And am trying to work out what MPPT solar charge controller is required.



Limiting the battery charging current / voltage using PWM or MPPT

The power of solar panels should match the battery capacity as much as possible, otherwise it will easily do abnormal charging. The best charging current for the battery is 10%-20% of ...

Battery Charging Time Calculator

How to use this calculator: Enter battery capacity, solar charging current, and current state of charge to estimate charging time.



How seriously should you take BMS Max Charge Current spec?

On the discharge side, the BMS has a Current Limit Protection of 1200A and will shut down the BMS if currents ever reach that level. And it also has a Maximum Continuous Overcurrent ...

What is the maximum charging current for a lithium solar battery?

The maximum charging current for a lithium solar battery depends on several factors, including battery chemistry, capacity, temperature, and charger specifications.



Hybrid Inverters: Input vs. Charge Current Guide

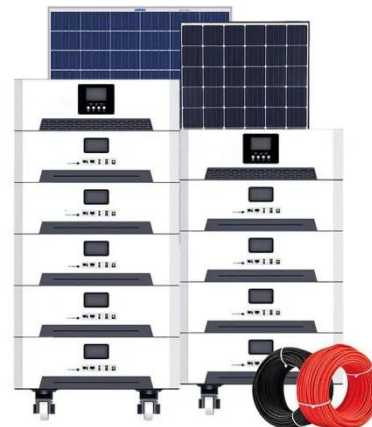
Understanding the difference between maximum solar input current and maximum solar charge current is critical for designing efficient, reliable solar



systems. The input current limits your solar array size, ...

Limit the maximal charging current

If you set "limit max charge current" in DVCC and all your chargers are physically wired to the GX, it should not go beyond this. Only exception is if feed-in is enabled, then this parameter is ...



Selecting Battery Charge/Discharge Rates

Although the batteries have a continuous charge or discharge current limit the inverter will also have its own charge or discharge current limit. This will apply no matter how many batteries ...

Solar Charge Current Limit and Load Current

You then set the maximum charge current in the GX device and this controls the attached devices including the Multiplus as that will also be

connected. See the Cerbo GX manual DVCC section.



Contact Us

For catalog requests, pricing, or partnerships, please visit:
<https://scelto.co.za>

