

What electricity does the factory power station use



Overview

Many power stations use diesel generators to power facilities with nuclear, natural gas, coal, hydro, or other sources of energy. These generators ensure a smooth flow of routine operations at power stations and act as a power backup during outages to keep the power stations. Power plants (also called power stations) pull off a similar trick, converting lumps of coal and drops of oil into zaps of electric current that can cook your dinner or charge your phone. If it weren't for power plants, I wouldn't be writing these words now—and you wouldn't be reading them. In. Electricity is distributed from the Generating Station to the equipment or machinery or lights of a factory through the following 18 vital components, in order. The brief purposes of these components are also explained in the below section. Generating Station - Generates electricity. For example, if a power plant with a single generator that has an electricity generation. A power station is a large-scale industrial facility designed for generating electricity and feeding it into an electrical network. These stations convert various forms of stored energy, whether.

What electricity does the factory power station use



Power Plant Basics: Types, Components, and How They Work

A power generation system is a group of process and equipment that work together in an industrial facility named a power station to create electricity. The equipment are such as boilers, turbines, ...

Electricity in factories

Electric Power Distribution in a Factory mainly operates on higher voltage ranges than the normal operating ranges in households. High voltages like 11KV, 33KV, 66KV, or 132KV from the generating ...

- LiFePO₄
- Wide temp: -20°C to 55°C
- Easy to expand
- Floor mount&wall mount
- Intelligent BMS
- Cycle Life:≥6000
- Warranty :10 years



How do power plants work? , How do we make electricity?

A power plant's job is to release this chemical energy as heat, use the heat to drive a spinning machine called a turbine, and then use the turbine to power a generator (electricity making ...

What Is a Power Station and How Does It Work?

Most power stations rely on a universal engineering principle: converting mechanical rotation into electrical energy. This conversion process is centered around two main components: the ...



Power Plant Generators: What It Is? How Does It Work?

In this guide, we'll walk you through the role of power plant generators, their importance, and how a generator functions as a secondary source of electric energy in various power stations.

Frequently Asked Questions (FAQs)

The amount of electricity that a power plant generates depends on its electricity generation capacity and on the amount of time the individual generators at a power plant operate at a specific capacity.



Power station

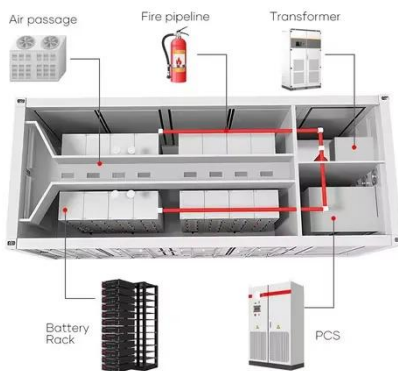
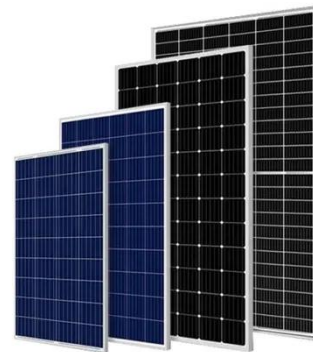
OverviewHistoryThermal power stationsPower from renewable energyStorage power stationsTypical power outputOperationsSee also



A power station, also referred to as a power plant and sometimes generating station or generating plant, is an industrial facility for the generation of electric power. Power stations are generally connected to an electrical grid. Many power stations contain one or more generators, rotating machines that convert mechanical power into three-phase electric power. The relative motion between a magnetic field

Power station

Many power stations contain one or more generators, rotating machines that convert mechanical power into three-phase electric power. The relative motion between a magnetic field and a conductor ...



How Does A Power Plant Work? , Allied Power Group

A power plant converts various forms of energy into electricity using turbines and generators. The heat generated by a fuel source, such as natural gas or coal, is used to produce steam, which drives a ...

How Much Electricity Does a Small Factory Use? A Comparative ...

But how much electricity does a small factory actually use? This question is not

as straightforward as it might seem, as the answer can vary dramatically depending on the type of factory, its location, and ...



Contact Us

For catalog requests, pricing, or partnerships, please visit:
<https://scelto.co.za>

