

# What is the input voltage of the 12v inverter



## What is the input voltage of the 12v inverter

---



### Understanding inverter voltage

For a 12V inverter, the maximum input inverter voltage is typically around 16VDC. This safety margin provides a buffer to accommodate fluctuations in the power source and protect the ...

### Power inverter

300 to 800 V DC, when power is from electric vehicle battery packs to power the motors or in vehicle-to-grid systems. Hundreds of thousands of volts, where the inverter is part of a high-voltage direct ...

114KWh ESS



Deye inverters and Deye batteries are more compatible.

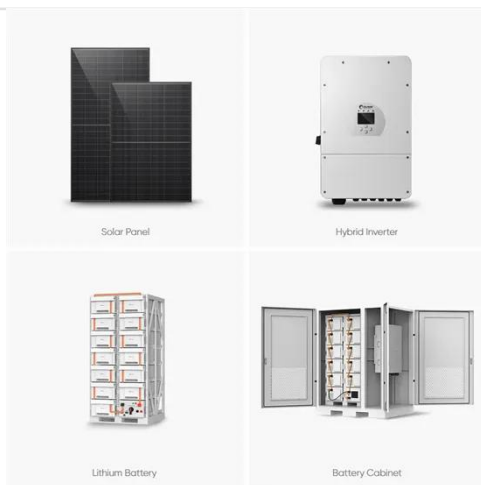
### Inverter Specifications and Data Sheet

The article provides an overview of inverter functions, key specifications, and common features found in inverter systems, along with an example of power calculations and inverter classification by power ...

### Understanding Inverter Input and

## Output: What is the Relationship

Input Voltage: The input voltage supplied from the DC source to the inverter follows the inverter voltage specifications, which start from 12V, 24V, or 48V. Input Current: determines the amount of electric ...



## 12V vs. 24V vs. 48V Power Inverters: How to Choose the Right

...

Before diving into comparisons, let's clarify the basics. A power inverter's input voltage is the voltage of the DC power source it's designed to connect to--usually a battery (or bank of ...

## What Is the Input Voltage of a 12V Inverter A Practical Guide

Knowing the input voltage requirements of a 12V inverter ensures safer, more efficient power conversion. Whether for solar setups, RVs, or backup systems, maintaining the correct voltage range ...



## What is the input voltage of an AC inverter?

There are several common input voltage options available for AC inverters. The most common input voltages are 12V,

24V, and 48V DC. These voltages are commonly used in ...



## 12V vs 24V Inverter: What's the difference between 12 and 24 Volt

The difference between a 12V and 24V inverter is the amount of input volts it can handle. This is the voltage flowing from the battery into the inverter before the electricity is converted from DC to AC.



## Power Inverter Input Voltages , RV Solar Kits And Inverter Power ...

System Voltage: 12V inverters are designed for systems with 12V batteries, common in smaller applications like cars or small RVs. In contrast, 24V inverters work with 24V battery setups, typical ...

## Inverter DC Input Voltage Calculator

Find the ideal DC input voltage (12V, 24V, or 48V) for your inverter setup based on load power, current limits, and

efficiency to ensure optimal wiring and system safety.



---

## Contact Us

---

For catalog requests, pricing, or partnerships, please visit:  
<https://scelto.co.za>

