

Why can't the solar container lithium battery station cabinet be charged



Overview

Connect the power station to its original AC wall charger (or manufacturer-approved charger). Ensure the charging cable is securely plugged into both the unit and a working wall outlet. Allow it to charge for at least 30–60 minutes, even if no indicators immediately. Justrite's Lithium-Ion battery Charging Safety Cabinet is engineered to charge and store lithium batteries safely. Made with a proprietary 9-layer ChargeGuard™ system that helps minimize potential losses from fire, smoke, and explosions caused by Lithium batteries. The base station solar container battery cannot be turned on is it broken The base station solar container battery cannot be turned on is it broken <div class="df_qntext">Why is my battery-cabinetno not working?

1. The charger parameters of the lithium battery do not match the charging parameters of the battery, resulting in lithium Why My Lithium Battery won't Charge?

And How to Fix It Your lithium battery won't charge for several. This article will introduce in detail how to design an energy storage cabinet device, and focus on how to integrate key components such as PCS (power conversion system), EMS (energy management system), lithium battery, BMS (battery management system), STS (static transfer switch), PCC (electrical. We are at the forefront of innovation in lithium battery safety and storage solutions. Learn about key features, benefits, and best practices for workplace safety . KDM solar battery cabinets provide you with the ultimate outdoor dust-tight, watertight, and weatherproof solution for your solar batteries.

Why can't the solar container lithium battery station cabinet be charged?



Troubleshooting Common Portable Power Station Issues: A Practical ...

A comprehensive guide to diagnosing and resolving common portable power station issues, from not turning on to solar charging failures, ensuring minimal downtime and maximum device lifespan.

Lithium-Ion Battery Charging Safety Cabinet

The number of batteries that can be safely stored and charged in the cabinet will vary based on the amount of energy within each battery. Use the chart below to identify the energy of your batteries and ...



How to test the new energy solar container lithium battery station ...

At the same time, setting the charging and discharging parameters, configuring the safety and protection settings, and protecting the lithium battery energy storage cabinet from potential dangers such as ...

The base station solar container

battery cannot be turned on is it ...

I have a PowMr hybrid off grid inverter, a Lithium battery and 4x550W solar panels. The inverter is set to SBU priority and Only Solar charging enabled in Settings and it is not charging

12.8V 100Ah



The Ultimate Guide to Battery Charging Cabinets: Safe Storage and

Discover the importance of battery charging cabinets for safe lithium-ion battery storage. Learn about key features, benefits, and best practices for workplace safety.

Why you shouldn't charge lithium-ion batteries in a safety cabinet

Some manufacturers add power sockets to safety cabinets to make them suitable for charging batteries. But that doesn't make them safe for lithium-ion use. A battery fire generates an ...



SOLAR CONTROLLER CABINET CANNOT BE FULLY CHARGED

Photovoltaic energy storage cabinets are designed specifically to store energy generated from solar panels, integrating

seamlessly with photovoltaic systems. Energy storage systems must adhere to

...



Why can't the lithium battery station cabinet be charged

This article will explore in detail why lithium batteries won't charge, common causes why a lithium battery won't charge, device-specific scenarios, how to diagnose this problem, troubleshooting



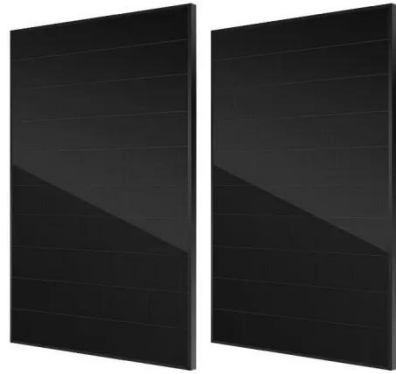
Why can't the solar container lithium battery station cabinet be charged

Why do you need a lithium-ion battery cabinet? These cabinets are essential for businesses and workplaces that rely on multiple lithium-ion batteries, ensuring safety and regulatory compliance.

6. Troubleshooting & support

A well-balanced battery does not disable the charger, even when the batteries are fully charged. But when the BMS frequently disables the charger, this is

an indication of cell imbalance.



Contact Us

For catalog requests, pricing, or partnerships, please visit:
<https://scelto.co.za>

